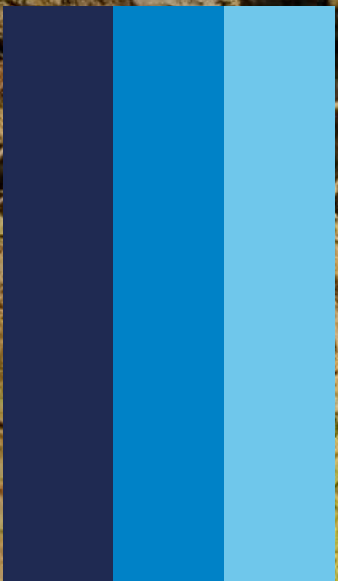




# BICYCLE TYRES TUBES 2022

**Mitas** TYRES

MY  
ENTYRE  
WORLD





# #MyEnTyreWorld

Fred Horny and Gaspi  
Photo: Jonny Mole



At MITAS we believe in sustainable mobility. Whether for commuting, recreation or sport we believe your bicycle should be fitted with the tyres that help you get where you want to be with the best possible ride and with the least possible impact.

*Enjoy your ride...*

The company tradition in the rubber industry dates back to 1908. With demand for bicycles and parts reaching record highs this year we have increased production to keep our customers stocked up and riders moving.

From elite level mountain bikers to hard riding city commuters and casual enthusiasts we offer a huge range of tyres and tubes, all made in Europe's largest dedicated factory and available for rapid shipping to retail outlets and wholesalers everywhere. The quality and reliability are the moving force for Mitas brand.

Tyres by size 03 – 04

Hotpatches Packaging 05 – 06

**MTB 07 – 24**

**ROAD GRAVEL 25 – 32**

**CITY TREKKING 33 – 42**

**ICE SNOW 43 – 44**

Technologies 45 – 48

**TUBES 49**

**GAADI TUBES 50**

Safety Inflating 51

Accessories 52

Notes 53



# TYRES BY SIZE

Nominal Diameter (mm)	ETRTO	Alternative size	Pattern Name	Category	Page	
635	40-635	28 x 1 1/2	HOOK	CITY TREKKING	39	
			MISTRAL	CITY TREKKING	42	
630	32-630	27 x 1 1/4	HOOK	CITY TREKKING	39	
			KRATOS	MTB	15	
622	66-622	29 x 2,60	MONARCH	MTB	17-18	
			SCYLLA	MTB	13-14	
	62-622	29 x 2,45	HIGHLANDER	MTB	16	
			KRATOS	MTB	15	
			MONARCH	MTB	17-18	
	60-622	29 x 2,35	SCYLLA	MTB	13-14	
			CHEETAH	MTB	19	
	57-622	29 x 2,25	OCELOT	MTB	20	
			KRATOS	MTB	15	
	54-622	29 x 2,10	SCYLLA	MTB	13-14	
ZEFYROS			MTB	11		
622	54-622	29 x 2,10	HYPERION	MTB	12	
			OCELOT	MTB	20	
	52-622	28 x 2,00	CHEETAH	MTB	19	
			TOMCAT	MTB	21	
	47-622	28 x 1,75 x 2 (700 x 45C)	CITYHOPPER	CITY TREKKING	36	
			FLASH	CITY TREKKING	37-38	
	622	47-622	28 x 1,75 x 2 (700 x 45C)	WALRUS	CITY TREKKING	42
				ELECTRON	CITY TREKKING	35
		42-622	700 x 40C	GRIPPER ICE	ICE SNOW	44
				HOOK	CITY TREKKING	39
40-622		700 x 38C	FLASH	CITY TREKKING	37-38	
			SEPIA	CITY TREKKING	41	
622		700 x 38C	GRIPPER	CITY TREKKING	41	
			X -ROAD	GRAVEL	29	
			X -ROAD	GRAVEL	29	
			CHEETAH	GRAVEL	32	
	OCELOT		GRAVEL	32		
	SHIELD		CITY TREKKING	40		
622	41	LANDMARK	CITY TREKKING	41		

Nominal Diameter (mm)	ETRTO	Alternative size	Pattern Name	Category	Page
622	37-622	700 x 35C	HOOK	CITY TREKKING	39
			FLASH	CITY TREKKING	37-38
	35-622	700 x 35C	FLIPPER	CITY TREKKING	42
			ELECTRON	CITY TREKKING	35
	33-622	700 x 33C	GRIPPER	GRAVEL	32
			X - SWAMP	GRAVEL	31
			X - FIELD	GRAVEL	30
	32-622	28 x 1 1/4 x 1 3/4 (700 x 32C)	X - ROAD	GRAVEL	29
			HOOK	CITY TREKKING	39
	28-622	700 x 28C	FLASH	CITY TREKKING	37-38
ARROW			ROAD	27	
25-622	700 x 25C	SYRINX	ROAD	28	
		ARROW	ROAD	27	
23-622	700 x 23C	SYRINX	ROAD	28	
		HOOK	CITY TREKKING	39	
590	37-590	26 x 1 3/8	FLASH	CITY TREKKING	37-38
			KRATOS	MTB	15
584	66-584	27,5 x 2,60	MONARCH	MTB	17-18
			SCYLLA	MTB	13-14
	62-584	27,5 x 2,45	MONARCH	MTB	17-18
			HIGHLANDER	MTB	16
	60-584	27,5 x 2,35	KRATOS	MTB	15
			SCYLLA	MTB	13-14
	57-584	27,5 x 2,25	CHEETAH	MTB	19
			OCELOT	MTB	20
	54-584	27,5 x 2,10	KRATOS	MTB	15
			SCYLLA	MTB	13-14
40-584	26 x 1 1/2	ZEFYROS	MTB	11	
		HYPERION	MTB	12	
584	27,5 x 2,10	OCELOT	MTB	20	
		CHEETAH	MTB	19	
584	21	TOMCAT	MTB	21	
584	39	HOOK	CITY TREKKING	39	

Nominal Diameter (mm)	ETRTO	Alternative size	Pattern Name	Category	Page	
559	60-559	26 x 2,35	DEFENDER	MTB	21	
			TRITON	MTB	22	
	57-559	26 x 2,25	CHARYBDIS	MTB	21	
			CITYHOPPER	CITY TREKKING	36	
	54-559	26 x 2,10	SCYLLA	MTB	13-14	
			CHEETAH	MTB	19	
	52-559	26 x 2,00	OCELOT	MTB	20	
			SCYLLA	MTB	22	
	540	52-559	26 x 2,00	RAPID	MTB	23
				CHARYBDIS	MTB	21
50-559		26 x 1,90	SAURUS	MTB	22	
			ACRIS	MTB	23	
40-559		26 x 1,50	DART	MTB	22	
			BLADE	MTB	21	
540		37-540	24 x 1 3/8	WINNER	MTB	23
				COBRA	CITY TREKKING	42
507		54-507	24 x 2,10	FROSTER	ICE SNOW	44
				SHIELD	CITY TREKKING	40
507	50-507	24 x 1,90	SEPIA	CITY TREKKING	41	
			WALRUS	CITY TREKKING	42	
507	47-507	24 x 1,75 x 2	FLASH	CITY TREKKING	37-38	
			SHIELD	CITY TREKKING	40	
507	24 x 1,75 x 2	24 x 1,75 x 2	FLASH	CITY TREKKING	37-38	
			RAPID	MTB	23	
507	24 x 1,75 x 2	24 x 1,75 x 2	SHIELD	CITY TREKKING	40	
			WALRUS	CITY TREKKING	42	
507	44	FROSTER JP	ICE SNOW	44		

Nominal Diameter (mm)	ETRTO	Alternative size	Pattern Name	Category	Page
406	57-406	20 x 2,25	ZIRRA F	BMX	24
			ZIRRA R	BMX	24
	54-406	20 x 2,10	CHEETAH	MTB	19
			OCELOT	MTB	20
	52-406	20 x 2,00	NITRO	BMX	24
			WINNER	MTB	23
	50-406	20 x 1,90	SCYLLA	MTB	22
			RAPID	MTB	23
	47-406	20 x 1,75 x 2	SHIELD	CITY TREKKING	40
			WALRUS	CITY TREKKING	42
40-406	20 x 1,50	FLASH	CITY TREKKING	37-38	
		COBRA	CITY TREKKING	42	
355	47-355	18 x 1,75 x 2	WINNER	MTB	23
			WALRUS	CITY TREKKING	42
305	54-305	16 x 2,10	CHEETAH	MTB	19
			OCELOT	MTB	20
305	47-305	16 x 1,75 x 2	X-CALIBER	MTB	23
			WINNER	MTB	23
254	47-254	14 x 1,75 x 2	WALRUS	CITY TREKKING	42
			RAPID	MTB	23
203	47-203	12 1/2 x 1,75 x 2 1/4	WINNER	MTB	23
			X-CALIBER	MTB	23
152	47-152	10 x 1,75 x 2	WALRUS	CITY TREKKING	42
			RAPID	MTB	23
152	42	WALRUS	CITY TREKKING	42	





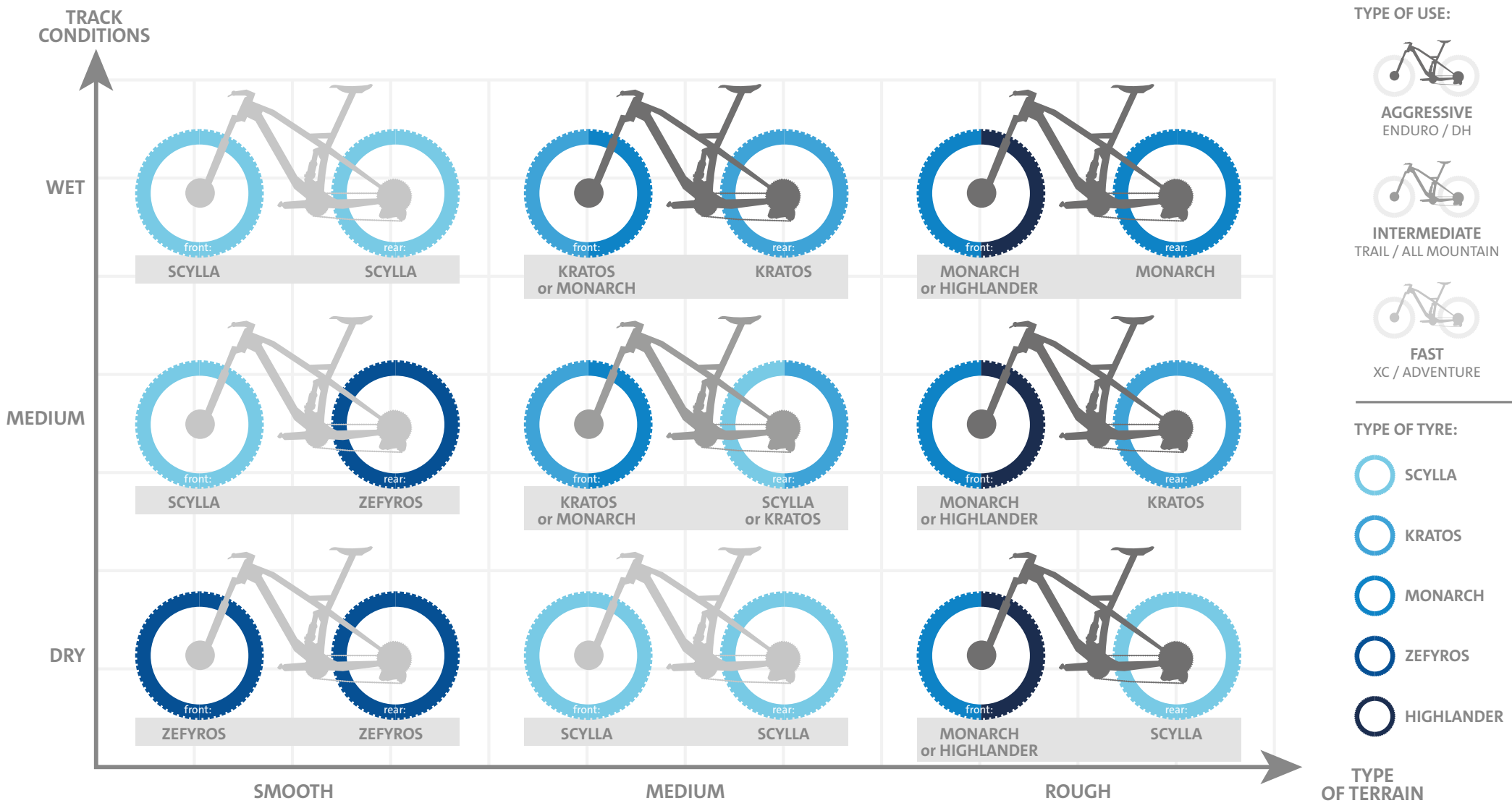




# MTB



# MTB – RANGE CONCEPT



# OVERVIEW

FAST	INTERMEDIATE	AGGRESSIVE
<b>ELITE</b>		
 <p>ZEFYROS</p>	 <p>SCYLLA    HYPERION    KRATOS</p>	 <p>MONARCH    HIGHLANDER</p>
<b>STANDARD</b>		
 <p>CHEETAH</p>	 <p>OCELOT</p>	 <p>TOMCAT</p>





Filip Adel, Superior Velsbike Team  
Photo: Miloš Lubas

1  
1



## ZEFYROS ELITE

FAST XC



Advanced design for even better handling and faster riding in easy rigid terrain. Higher side-knobs bring more traction and confidence in corners thus making the tyre more versatile without losing anything from its original merits.

Tyre name	Performance level	ETRTO	Alternative size	Construction	TPI	Tread compound	Technology	Inflating (kPa)	Load (kg)	Weight (g)	Mitas code	
<b>MTB – ELITE</b>												
ZEFYROS	Elite	57-622	29 x 2,25	TUBELESS SUPRA	127	CRX		380	144	660	5-10952755	R14
ZEFYROS	Elite	57-584	27,5 x 2,25	TUBELESS SUPRA	127	CRX		380	136	610	5-10952740	R14



Filip Adel, Superior Velsbike Team



## HYPERION ELITE

WET OR SOFT TERRAIN



HYPERION is a slightly deeper pattern design for additional grip in wet or soft terrain, extended forward plate for better cornering stability, and three direction grooves on knobs for increased riding confidence on obstacles. All this translates into better performance in muddy conditions.

Tyre name	Performance level	ETRTO	Alternative size	Construction	TPI	Tread compound	Technology	Inflating (kPa)	Load (kg)	Weight (g)	Mitas code	
<b>MTB – ELITE</b>												
HYPERION	Elite	54-622	29 x 2,10	TUBELESS SUPRA	127	CRX		380	133	650	5-10967261	R13
HYPERION	Elite	54-584	27,5 x 2,10	TUBELESS SUPRA	127	CRX		380	126	610	5-10967260	R13

1  
2





# SCYLLA ELITE

XC ALL-ROUNDER



SCYLLA is our most versatile tyre for a broad range of MTB ride. The new tread profile is designed to offer advanced XC performance but also more aggressive trail capabilities. The fast tread pattern in combination with optimal side knobs positioning for plenty of cornering grip makes SCYLLA the best choice for you. It is also the choice of most of our riders on the elite world circuit, thanks to low rolling resistance and impressive traction, for both great acceleration and braking in any track conditions.

Tyre name	Performance level	ETRTO	Alternative size	Construction	TPI	Tread compound	Technology	Inflating (kPa)	Load (kg)	Weight (g)	Mitas code
<b>MTB – ELITE</b>											
SCYLLA	Elite	66-622	29 x 2,60	DH SUPRA MAX	127	Dual compound	eBike ready	330	136	1160	5-10967396 R22
SCYLLA	Elite	62-622	29 x 2,45	DH SUPRA MAX	127	Dual compound	eBike ready	350	140	1080	5-10967397 R22
SCYLLA	Elite	57-622	29 x 2,25	TUBELESS SUPRA	127	CRX		380	144	740	5-10967359 R22
SCYLLA	Elite	66-584	27,5 x 2,60	DH SUPRA MAX	127	Dual compound	eBike ready	330	140	1130	5-10967398 R22
SCYLLA	Elite	62-584	27,5 x 2,45	DH SUPRA MAX	127	Dual compound	eBike ready	350	140	1050	5-10967412 R22
SCYLLA	Elite	57-584	27,5 x 2,25	TUBELESS SUPRA	127	CRX		380	136	620	5-10952738 V96
SCYLLA	Elite	57-559	26 x 2,25	TUBELESS SUPRA	127	CRX		380	131	550	5-10952363 V96



Check the video here:

Emma Terrigeol, Team Cycles Darnanville  
Photo: Milos Stafek

1  
3

# AGGRESSIVE XC



- 1 **Medium-high side knobs**  
Featuring a center groove for increased deformation and better progressivity.
- 2 **1-2-2 Compact and low-high center line**  
for better rolling resistance.
- 3 **Self cleaning lips**
- 4 **Linear and Perpendicular**  
intermediate knobs to improve traction and braking.

NEW SCYLLA



MTB  
ELITE

ridemitas.com

1  
4





Nicolas Rihouey  
Team Cycles Darnanville  
Photo: Miloš Štáfek



## KRATOS ELITE

INTERMEDIATE TRAIL



KRATOS is the right choice for rough and hard terrain. More aggressive profile with excellent traction and better control of the bike. The double compound brings even better grip and superb handling in sharp corners. KRATOS is a combination of traction, all-round stability, effective braking properties and low rolling resistance in its class, making it an ideal choice for trail exploration and rough terrain.

Tyre name	Performance level	ETRTO	Alternative size	Construction	TPI	Tread compound	Technology	Inflating (kPa)	Load (kg)	Weight (g)	Mitas code
<b>MTB – ELITE</b>											
KRATOS	Elite	66-622	29 x 2,60		127	Dual compound		330	136	1160	5-10967277 R10
KRATOS	Elite	62-622	29 x 2,45		127	Dual compound		350	140	930	5-10967351 R10
KRATOS	Elite	66-584	27,5 x 2,60		127	Dual compound		330	140	1030	5-10967384 R10
KRATOS	Elite	62-584	27,5 x 2,45		127	Dual compound		350	144	1210	5-10967344 R10
KRATOS	Elite	57-622	29 x 2,25	TUBELESS SUPRA	127	CRX		380	144	760	5-10952737 V98
KRATOS	Elite	57-584	27,5 x 2,25	TUBELESS SUPRA	127	CRX		380	136	710	5-10952739 V98



Enzo Cavard  
Photo: Abellan Julien



## HIGHLANDER ELITE

AGGRESSIVE ENDURO / GRAVITY



This tyre is a perfect match for dry and hard-packed terrains. Optimally designed tread pattern allows not only driving in difficult terrain but also ensures great performance in climbing and downhill sections on both mountain bike and eMTB.

Tyre name	Performance level	ETRTO	Alternative size	Construction	TPI	Tread compound	Technology	Inflating (kPa)	Load (kg)	Weight (g)	Mitas code
<b>MTB – ELITE</b>											
HIGHLANDER	Elite	62-622	29 x 2,45		127	Dual compound		350	140	1290	5-10967346 R02
HIGHLANDER	Elite	62-584	27,5 x 2,45		127	Dual compound		350	144	1210	5-10967345 R02



MTB  
ELITE







Simon Andre  
Photo: Rupert Fowler

17



# MONARCH ELITE

ENDURO / GRAVITY,  
ALL TRACKS CONDITIONS



THE MOST GRAVITY ORIENTED TYRE of Mitas range developed in collaboration with Mitas Enduro athletes. Perfect all-round performance for all tracks and conditions. The advanced intermediate profile is combined with enduro dual compounds and Downhill Supra Max construction. Aggressive shoulder knobs, with optimal spaced tread design provide maximum braking, traction and cornering grip. The ground-contact grooves inspired by our winter tyres provide the best level of grip over any track conditions. Mitas MONARCH, the ride has no limit.

Tyre name	Performance level	ETRTO	Alternative size	Construction	TPI	Tread compound	Technology	Inflating (kPa)	Load (kg)	Weight (g)	Mitas code
<b>MTB – ELITE</b>											
MONARCH	Elite	66-622	29 x 2,60		127	Dual compound		330	136	1390	5-10967393 R24
MONARCH	Elite	62-622	29 x 2,45		127	Dual compound		350	140	1160	5-10967395 R24
MONARCH	Elite	66-584	27,5 x 2,60		127	Dual compound		330	140	1250	5-10967394 R24
MONARCH	Elite	62-584	27,5 x 2,45		127	Dual compound		350	144	1020	5-10967413 R24

Check the video here:



# ENDURO

NEW MONARCH



- 1 Tall side knobs**  
Reinforced on the outside to offer maximum support in corners.
- 2 2-3-2 Progressive center line.**
- 3 Plenty of clearance** for self cleaning.
- 4 Linear and Perpendicular** grooves to improve grip and progressivity.



MTB  
ELITE

ridemitas.com

181







Fred Horny and Gaspi  
Photo: Jonny Mole



# CHEETAH

RUGGED TERRAIN WITH HARD GROUND

CHEETAH is a favourite choice for those who enjoy riding on rugged terrain with the hard ground. Even for gravel or travel adventure, CHEETAH is capable to bring you everywhere with a wide smile.

Tyre name	Performance level	ETRTO	Alternative size	Construction	TPI	Tread compound	Technology	Inflating (kPa)	Load (kg)	Weight (g)	Mitas code
MTB – STANDARD											
CHEETAH	Standard	60-622	29 x 2,35	Classic	22	BC		350	140	1110	5-10967373
CHEETAH	Standard	54-622	29 x 2,10	Classic	22	BC		380	128	1000	5-10952486
CHEETAH	Standard	60-584	27,5 x 2,35	Classic	22	BC		350	130	1040	5-10967374
CHEETAH	Standard	54-584	27,5 x 2,10	Classic	22	BC		380	120	940	5-10951744
CHEETAH	Standard	54-559	26 x 2,10	Classic	22	BC		380	116	900	5-10967375
CHEETAH	Standard	54-507	24 x 2,10	Classic	22	BC		380	106	820	5-10967376 <b>KIDS</b>
CHEETAH	Standard	54-406	20 x 2,10	Classic	22	BC		380	87	660	5-10967377 <b>KIDS</b>
CHEETAH	Standard	54-305	16 x 2,10	Classic	22	BC		380	68	540	5-10967378 <b>KIDS</b>

R15

R15

R15

R15

R15

**KIDS** R15

**KIDS** R15

**KIDS** R15



Petr Leták  
Photo: Luis Moreno Blázquez



# OCELOT

MEDIUM-HARD TERRAIN – HARD GROUND

OCELOT has an intermediate tread pattern and is a popular choice for those who enjoy riding on a medium-hard terrain with the hard ground. The tread geometry is designed for good self-cleaning under demanding conditions.

Tyre name	Performance level	ETRTO	Alternative size	Construction	TPI	Tread compound	Technology	Inflating (kPa)	Load (kg)	Weight (g)	Mitas code
MTB – STANDARD											
OCELOT	Standard	60-622	29 x 2,35	Classic	22	BC		350	140	1110	5-10967324
OCELOT	Standard	54-622	29 x 2,10	Classic	22	BC		380	128	1000	5-10952471
OCELOT	Standard	60-584	27,5 x 2,35	Classic	22	BC		350	130	1040	5-10967323
OCELOT	Standard	54-584	27,5 x 2,10	Classic	22	BC		380	120	940	5-10951725
OCELOT	Standard	54-559	26 x 2,10	Classic	22	BC		380	116	900	5-10952468
OCELOT	Standard	54-507	24 x 2,10	Classic	22	BC		380	106	820	5-10952732 <b>KIDS</b>
OCELOT	Standard	54-406	20 x 2,10	Classic	22	BC		380	87	660	5-10952495 <b>KIDS</b>
OCELOT	Standard	54-305	16 x 2,10	Classic	22	BC		380	68	540	5-10951854 <b>KIDS</b>

V85

V85

V85

V85

V85

**KIDS** V85

**KIDS** V85

**KIDS** V85





Fred Horny  
Photo: Luc Gregoire



TOMCAT

CHARYBDIS

DEFENDER

BLADE

Tyre name	Performance level	ETRTO	Alternative size	Construction	TPI	Tread compound	Colour Tread/Side-wall	Inflating (kPa)	Load (kg)	Weight (g)	Mitas code
MTB – STANDARD											
TOMCAT	Standard	54-622	29 x 2,10	Classic	22	BC		380	128	1000	5-10952485
TOMCAT	Standard	54-584	27,5 x 2,10	Classic	22	BC		380	120	940	5-10951743
CHARYBDIS	Standard	57-559	26 x 2,25	Classic	22	BC		380	125	960	5-10952306
CHARYBDIS	Standard	52-559	26 x 2,00	Classic	22	BC		420	116	900	5-10952469
DEFENDER	Standard	60-559	26 x 2,35	Classic	22	BC		350	129	1000	5-10952339
BLADE	Standard	50-559	26 x 1,90	Classic	22	BC		450	126	740	5-10951173

R12

R12

V76

V76

V93

V83



Photo: Luigi Sestili



DART

SAURUS

TRITON

SCYLLA

Tyre name	Performance level	ETRTO	Alternative size	Construction	TPI	Tread compound	Colour Tread/Side-wall	Inflating (kPa)	Load (kg)	Weight (g)	Mitas code
MTB – STANDARD											
DART	Standard	50-559	26 x 1,90	Classic	22	BC		450	86	760	5-10952705
DART	Standard	50-507	24 x 1,90	Classic	22	BC		450	85	680	5-10952712
SAURUS	Standard	50-559	26 x 1,90	Classic	22	BC		450	114	770	5-10951266
TRITON	Standard	57-559	26 x 2,25	Classic	22	BC		380	125	980	5-10952316
SCYLLA	Standard	54-559	26 x 2,10	Classic	22	BC		380	116	900	5-10952271
SCYLLA	Standard	50-507	24 x 1,90	Classic	22	BC		450	104	790	5-10967238
SCYLLA	Standard	50-507	24 x 1,90	Classic	22	BC		450	104	840	5-10952412
SCYLLA	Standard	50-406	20 x 1,90	Classic	22	BC		450	85	660	5-10952420
SCYLLA	Standard	50-406	20 x 1,90	Classic	22	BC		450	85	620	5-10952413

V67

KIDS V67

V61

R08

V75

KIDS V75

KIDS V75

KIDS V75

KIDS V75





Tyre name	Performance level	ETRTO	Alternative size	Construction	TPI	Tread compound	Inflating (kPa)	Load (kg)	Weight (g)	Mitas code	
<b>MTB – STANDARD</b>											
ACRIS	Standard	50-559	26 x 1,90	Classic	22	BC	450	114	760	5-10951278	V60
WINNER	Standard	50-559	26 x 1,90	Classic	22	BC	280	86	750	5-10951154	V45
WINNER	Standard	50-507	24 x 1,90	Classic	22	BC	320	85	710	5-10952713	KIDS V45
WINNER	Standard	50-406	20 x 1,90	Classic	22	BC	320	70	570	5-10952711	KIDS V45
WINNER	Standard	47-355	18 x 1,75 x 2	Classic	22	BC	320	57	520	5-10951843	KIDS V45
WINNER	Standard	47-305	16 x 1,75 x 2	Classic	22	BC	320	50	470	5-10951852	KIDS V45
WINNER	Standard	47-254	14 x 1,75 x 2	Classic	22	BC	450	52	350	5-10951770	KIDS V45
RAPID	Standard	52-559	26 x 2,00	Classic	22	BC	420	116	800	5-10952707	V36
RAPID	Standard	47-507	24 x 1,75 x 2	Classic	22	BC	450	95	690	5-10952085	KIDS V36
RAPID	Standard	47-406	20 x 1,75 x 2	Classic	22	BC	450	78	590	5-10952716	KIDS V36
RAPID	Standard	47-305	16 x 1,75 x 2	Classic	22	BC	380	55	470	5-10951850	KIDS V36
RAPID	Standard	47-203	12 1/2 x 1,75 x 2 1/4	Classic	22	BC	250	30	360	5-10967340	KIDS V36
X-CALIBER	Standard	47-305	16 x 1,75 x 2	Classic	22	BC	450	67	450	5-10951837	KIDS V92
X-CALIBER	Standard	47-203	12 1/2 x 1,75 x 2 1/4	Classic	22	BC	450	47	320	5-10967334	KIDS V92



BMX

Tyre name	Performance level	ETRTO	Alternative size	Construction	TPI	Tread compound	Inflating (kPa)	Load (kg)	Weight (g)	Mitas code	
<b>BMX</b>											
ZIRRA F	Standard	57-406	20 x 2,25	Classic	22	BC	380	97	720	5-10967348	KIDS V94
ZIRRA R	Standard	54-406	20 x 2,10	Classic	22	BC	380	87	700	5-10967349	KIDS V88
NITRO	Standard	52-406	20 x 2,00	Classic	22	BC	420	96	660	5-10952305	KIDS V89



MTB  
STANDARD/BMX







# ROAD GRAVEL





Fred Horny  
Photo: Richard Bord



## ARROW ELITE

RACING PRO



The Mitas ARROW is a road tyre with TEXTRA technology, a high-density fabric that reinforces the entire carcass of the tyre. Excellent suppleness combined with low weight helps to increase durability and puncture resistance. The ARROW weighs only 250g and uses the excellent SMC (Silica Medium Compound) rubber, a special compound with activated silica. It is designed for competition use with high level performance in all conditions, including wet and low temperatures.

Tyre name	Performance level	ETRTO	Alternative size	Construction	TPI	Tread compound	Technology	Inflating (kPa)	Load (kg)	Weight (g)	Mitas code	
<b>ROAD – ELITE</b>												
ARROW	Elite	28-622	700 x 28C	Racing Pro	127	SMC		700	78	290	5-10967297	R16
ARROW	Elite	25-622	700 x 25C	Racing Pro	127	SMC		800	75	250	5-10967295	R16
ARROW	Standard	28-622	700 x 28C	Classic	22	RC		700	78	450	5-10967381	R16
ARROW	Standard	25-622	700 x 25C	Classic	22	RC		800	75	430	5-10967382	R16



Fred Horny  
Photo: Richard Bord



## SYRINX ELITE

RACING PRO



SYRINX road tyre is made of a very dense and extremely stiff rubberized fabric placed around the entire bead of the tyre. It is excellent elasticity at almost negligible weight increases the durability of the tyre against puncture and abrasion. Made of SMC (Silica Medium Compound) It is designed for sporting use in all-round conditions. Its stable properties also allow the blend to excel for training in low-temperature conditions.

Tyre name	Performance level	ETRTO	Alternative size	Construction	TPI	Tread compound	Technology	Inflating (kPa)	Load (kg)	Weight (g)	Mitas code	
<b>ROAD – ELITE</b>												
SYRINX	Elite	25-622	700 x 25C	Racing Pro	127	SMC		800	75	240	5-10950461	V80
SYRINX	Elite	23-622	700 x 23C	Racing Pro	127	SMC		800	66	230	5-10950231	V80
SYRINX	Standard	25-622	700 x 25C	Classic	22	RC		800	71	430	5-10950453	V80
SYRINX	Standard	23-622	700 x 23C	Classic	22	RC		800	63	430	5-10950211	V80





# X-ROAD ELITE

EASY-HARD PACKED TERRAIN/ROADS



Tread pattern suitable both for riding in easy, hardpacked terrain and on the roads. Finer and smaller tread figures, especially in the central part of the tyre, ensure low rolling resistance bring joy from fast and comfortable riding.

Tyre name	Performance level	ETRTO	Alternative size	Construction	TPI	Tread compound	Technology	Inflating (kPa)	Load (kg)	Weight (g)	Mitas code
GRAVEL											
X-ROAD	Elite	42-622	700 x 40C	TUBELESS SUPRA	127	CRX		500	122	470	5-10967390 R17
X-ROAD	Elite	40-622	700 x 38C	TUBELESS SUPRA	127	CRX		550	118	455	5-10967325 R17
X-ROAD	Elite	33-622	700 x 33C	TUBELESS SUPRA	127	CRX		600	100	330	5-10952860 R17



# X-FIELD ELITE

MODERATE - RATHER SOLID TERRAIN



The most versatile tread pattern designed for moderate and rather solid terrain. Tread figures with optimal height and allocation provide low rolling resistance, speed, traction and effective braking. X-FIELD is the right choice for most CX tracks.

Tyre name	Performance level	ETRTO	Alternative size	Construction	TPI	Tread compound	Technology	Inflating (kPa)	Load (kg)	Weight (g)	Mitas code
GRAVEL											
X-FIELD	Elite	33-622	700 x 33C	TUBELESS SUPRA	127	CRX		600	100	350	5-10952861 R18





3  
1



# X-SWAMP ELITE

WET – MUDDY – SOFT TERRAIN



The roughest pattern designed for wet, muddy or soft terrain. The layout and size of knobs provide perfect traction, solid bike handling and tread self-cleaning function.

Tyre name	Performance level	ETRTO	Alternative size	Construction	TPI	Tread compound	Technology	Inflating (kPa)	Load (kg)	Weight (g)	Mitas code
GRAVEL											
X-SWAMP	Elite	33-622	700 x 33C	TUBELESS SUPRA	127	CRX		600	100	360	5-10952862

R19



Photo: Giulia Blasi



CHEETAH



OCELOT



GRIPPER

Tyre name	Performance level	ETRTO	Alternative size	Construction	TPI	Tread compound	Technology	Inflating (kPa)	Load (kg)	Weight (g)	Mitas code
GRAVEL											
CHEETAH	Standard	40-622	700 x 38C	Classic	22	BC		550	113	730	5-10967386
OCELOT	Standard	40-622	700 x 38C	Classic	22	BC		550	113	700	5-10967387
GRIPPER	Standard	35-622		Classic	22	BC		600	98	610	5-10951222

R15

V85

V84

ridemitas.com

3  
2

Mitas

GRAVEL





Check the video here



# CITY TREKKING





Photo: Giulia Blasi

35



# ELECTRON

CITY E-BIKES



Tyre pattern specifically designed for city e-bikes providing increased traction on sides of the tread that brings better grip in curves. Applied E-PROTEC 360° technology increases puncture resistance, riding comfort and ensures exceptional safety under reduced visibility conditions. The Tyre is certified for e-bikes up to 50 km/h (EHK75).

Tyre name	Performance level	ETRTO	Alternative size	Construction	TPI	Tread compound	Technology	Inflating (kPa)	Load (kg)	Weight (g)	Colour Tread/Sidewall	Mitas code
<b>CITY &amp; TREKKING</b>												
ELECTRON	Elite	47-622	28 x 1,75; 700 x 45C	DYNAMIC	29	OC	▲ E-PROTEC 360°	450	135	800	■	5-10967306 R21
ELECTRON	Elite	47-622	28 x 1,75; 700 x 45C	Classic	22	OC	▲ E-APS	450	135	910	■	5-10967379 R21
ELECTRON	Elite	37-622	700 x 35C	DYNAMIC	29	OC	▲ E-PROTEC 360°	600	113	670	■	5-10967305 R21
ELECTRON	Elite	37-622	700 x 35C	Classic	22	OC	▲ E-APS	600	113	660	■	5-10967380 R21

- 1 Puncture protection Rubber belt
- 2 Highly visible reflex stripe 10 mm wide
- 3 E-protec 360°

Check the video here:



Photo: Giulia Blasi



# CITYHOPPER

CITY E-BIKES



As the name CITYHOPPER suggests, it is the right choice for high-quality surfaces in urban areas. The casing profile provides a comfortable ride and dampens road surface bumps. Some versions of the casing offer additional protection and safety features. All tyres with antipuncture system are E-BIKE ready.



Tyre name	Performance level	ETRTO	Alternative size	Construction	TPI	Tread compound	Technology	Inflating (kPa)	Load (kg)	Weight (g)	Colour Tread/Sidewall	Mitas code
<b>CITY &amp; TREKKING</b>												
CITYHOPPER	Elite	57-559	26 x 2,25	Classic	22	BC	▲ APS   ▲ RS	382	133	870	■	5-10967409 V99
CITYHOPPER	Elite	57-559	26 x 2,25	Classic	22	BC	▲ APS   ▲ RS	382	133	870	■	5-10967410 V99
CITYHOPPER	Elite	52-622	28 x 2,00	Classic	22	BC	▲ APS   ▲ RS	420	141	860	■	5-10952440 V99
CITYHOPPER	Elite	52-622	28 x 2,00	Classic	22	BC	▲ APS   ▲ RS	42	141	890	■	5-10952446 V99
CITYHOPPER	Elite	52-622	28 x 2,00	Classic	22	BC	▲ APS   ▲ RS	420	141	880	■	5-10952442 V99
CITYHOPPER	Standard	57-559	26 x 2,25	Classic	22	BC		382	133	880	■	5-10967407 V99
CITYHOPPER	Standard	57-559	26 x 2,25	Classic	22	BC		382	133	880	■	5-10967408 V99
CITYHOPPER	Standard	52-622	28 x 2,00	Classic	22	BC		420	141	910	■	5-10952441 V99
CITYHOPPER	Standard	52-622	28 x 2,00	Classic	22	BC		420	141	810	■	5-10952447 V99
CITYHOPPER	Standard	52-622	28 x 2,00	Classic	22	BC		420	141	810	■	5-10952443 V99
CITYHOPPER	Standard	57-559	26 x 2,25	Classic	22	BC		380	133	910	■	5-10951856 V99





# FLASH

BEAT CITY TRAFFIC



Do you want to get through city traffic in a flash? FLASH is the ideal choice to beat city traffic. The tread structure provides low rolling resistance and good adhesion on both dry and wet surfaces. FLASH is available in many sizes and 2 colour combinations. All tyres with antipuncture system are E-BIKE ready.

Tyre name	Performance level	ETRTO	Alternative size	Construction	TPI	Tread compound	Technology	Inflating (kPa)	Load (kg)	Weight (g)	Colour Tread/Sidewall	Mitas code
CITY & TREKKING												
FLASH	Elite	47-622	28 x 1,75; 700 x 45C	Classic	22	BC	▲ APS   ▲ RS	450	127	880		5-10952229
FLASH	Elite	47-622	28 x 1,75; 700 x 45C	Classic	29	OC	▲ ST 3 mm   ▲ RS	450	135	1000		5-10952228
FLASH	Elite	42-622	700 x 40C	Classic	22	BC	▲ APS   ▲ RS	500	115	790		5-10952202
FLASH	Elite	42-622	700 x 40C	Classic	29	OC	▲ ST 3 mm   ▲ RS	500	122	970		5-10952205
FLASH	Elite	37-622	700 x 35C	Classic	22	BC	▲ APS   ▲ RS	600	106	670		5-10951319
FLASH	Elite	37-622	700 x 35C	Classic	29	OC	▲ ST 3 mm   ▲ RS	600	113	770		5-10951316
FLASH	Elite	28-622	700 x 28C	Classic	22	BC	▲ APS   ▲ RS	700	78	450		5-10950489
FLASH	Elite	47-559	26 x 1,75 x 2	Classic	22	BC	▲ APS   ▲ RS	450	115	740		5-10952157
FLASH	Elite	47-559	26 x 1,75 x 2	Classic	29	OC	▲ ST 3 mm   ▲ RS	450	122	900		5-10952168
FLASH	Elite	50-507	24 x 1,90	Classic	29	OC	▲ ST 3 mm   ▲ RS	450	107	880		5-10967268

Photo: Giulia Blasi

37



Photo: Giulia Blasi



Tyre name	Performance level	ETRTO	Alternative size	Construction	TPI	Tread compound	Technology	Inflating (kPa)	Load (kg)	Weight (g)	Colour Tread/Sidewall	Mitas code
CITY & TREKKING												
FLASH	Elite	47-406	20 x 1,75 x 2	Classic	29	OC	▲ ST 3 mm   ▲ RS	450	80	700		5-10967265
FLASH	Standard	47-622	28 x 1,75; 700 x 45C	Classic	22	BC		450	127	820		5-10952225
FLASH	Standard	47-622	28 x 1,75; 700 x 45C	Classic	22	BC	▲ RS	450	127	820		5-10952224
FLASH	Standard	47-622	28 x 1,75; 700 x 45C	Classic	22	BC	▲ RS	450	127	780		5-10952150
FLASH	Standard	42-622	700 x 40C	Classic	22	BC		500	115	740		5-10952213
FLASH	Standard	42-622	700 x 40C	Classic	22	BC	▲ RS	500	115	740		5-10952717
FLASH	Standard	42-622	700 x 40C	Classic	22	BC	▲ RS	500	115	740		5-10967298
FLASH	Standard	37-622	700 x 35C	Classic	22	BC		600	106	610		5-10951306
FLASH	Standard	32-622	700 x 32C	Classic	22	BC		650	90	550		5-10950805
FLASH	Standard	28-622	700 x 28C	Classic	22	BC		700	78	430		5-10950476
FLASH	Standard	37-590	26 x 1 3/8	Classic	22	BC		600	101	620		5-10951196
FLASH	Standard	47-559	26 x 1,75 x 2	Classic	22	BC		450	115	750		5-10952175
FLASH	Standard	47-559	26 x 1,75 x 2	Classic	22	BC		450	115	700		5-10952139
FLASH	Standard	47-559	26 x 1,75 x 2	Classic	22	BC	▲ RS	450	115	750		5-10952166
FLASH	Standard	40-559	26 x 1,50	Classic	22	BC		550	102	640		5-10951412
FLASH	Standard	50-507	24 x 1,90	Classic	22	BC		450	107	680		5-10967267
FLASH	Standard	47-406	20 x 1,75 x 2	Classic	22	BC		450	80	560		5-10967264

ridemitas.com

37

Mitas

CITY TREKKING





Photo: Giulia Blasi

39



# HOOK

CITY TREK

- ANTIPUNCTURE SYSTEM
- STOP THORN
- eBike ready

The universal tread pattern of the HOOK tyre is designed for riding on poor and unpaved surfaces. The almost smooth central part of the tread ensures less rolling resistance when riding on the road. Some tyres are also manufactured with other protective and safety features. All tyres with antipuncture system are E-BIKE ready.

Tyre name	Performance level	ETRTO	Alternative size	Construction	TPI	Tread compound	Technology	Inflating (kPa)	Load (kg)	Weight (g)	Colour Tread/Sidewall	Mitas code	
<b>CITY &amp; TREKKING</b>													
HOOK	Elite	42-622	700 x 40C	Classic	22	BC	▲ APS   ▲ RS	500	115	790	■	5-10952187	V69
HOOK	Elite	37-622	700 x 35C	Classic	22	BC	▲ APS   ▲ RS	600	106	570	■	5-10951323	V69
HOOK	Elite	37-622	700 x 35C	Classic	29	OC	▲ ST 3 mm   ▲ RS	600	113	770	■	5-10951334	V69
HOOK	Standard	40-635	28 x 1 1/4	Classic	22	BC		550	115	730	■	5-10951605	V69
HOOK	Standard	32-630	27 x 1 1/4	Classic	22	BC		650	91	550	■	5-10950936	V69
HOOK	Standard	42-622	700 x 40C	Classic	22	BC		500	115	740	■	5-10952718	V69
HOOK	Standard	37-622	700 x 35C	Classic	22	BC		600	106	610	■	5-10951344	V69
HOOK	Standard	32-622	700 x 32C	Classic	22	BC		650	90	550	■	5-10950800	V69
HOOK	Standard	37-590	26 x 1 3/8	Classic	22	BC		600	101	620	■	5-10951202	V69
HOOK	Standard	40-584	26 x 1 1/2	Classic	22	BC		550	106	670	■	5-10951509	V69
HOOK	Standard	37-540	24 x 1 1/4	Classic	22	BC		600	93	530	■	5-10951124	V69



Photo: Giulia Blasi



# SHIELD

CITY TREK

- ANTIPUNCTURE SYSTEM
- eBike ready

The SHIELD casing is designed for poorer quality and unpaved surfaces, but the smooth centreline of the tread provides lower rolling resistance even when riding on the road. The tread is fitted with an integrated (Clever Face) wear identifier that alerts the cyclist to the degree of tread wear with a smiley-shaped mouth. Some tyres are manufactured with additional protection and safety features. Tyres with antipuncture system are E-BIKE ready.

Tyre name	Performance level	ETRTO	Alternative size	Construction	TPI	Tread compound	Technology	Inflating (kPa)	Load (kg)	Weight (g)	Colour Tread/Sidewall	Mitas code	
<b>CITY &amp; TREKKING</b>													
SHIELD	Elite	47-406	20 x 1,75 x 2	Classic	22	BC	▲ APS   ▲ RS	320	70	630	■	5-10951957	KIDS V81
SHIELD	Standard	40-622	700 x 38C	Classic	22	BC	😊	550	113	700	■	5-10951574	V81
SHIELD	Standard	47-559	26 x 1,75 x 2	Classic	22	BC	😊	450	115	750	■	5-10952164	V81
SHIELD	Standard	40-559	26 x 1,50	Classic	22	BC	😊	550	102	650	■	5-10951408	V81
SHIELD	Standard	47-507	24 x 1,75 x 2	Classic	22	BC	😊	350	91	730	■	5-10967247	KIDS V81
SHIELD	Standard	47-406	20 x 1,75 x 2	Classic	22	BC	😊	320	70	600	■	5-10952277	KIDS V81

😊 CLEVER FACE





Photo: Giulia Blasi

4  
1



Tyre name	Performance level	ETRTO	Alternative size	Construction	TPI	Tread compound	Technology	Inflating (kPa)	Load (kg)	Weight (g)	Mitas code
<b>CITY &amp; TREKKING</b>											
GRIPPER	Standard	42-622	700 x 40C	Classic	22	BC		500	115	710	5-10952192
LANDMARK	Standard	40-622	700 x 38C	Classic	22	BC		550	113	730	5-10951580
SYRINX	Standard	40-559	26 x 1,50	Classic	22	BC		550	102	560	5-10951406
SEPIA	Elite	42-622	700 x 40C	Classic	22	BC	▲ APS   ▲ RS	500	115	760	5-10952197
SEPIA	Standard	42-622	700 x 40C	Classic	22	BC		500	115	750	5-10952719
SEPIA	Standard	47-559	26 x 1,75 x 2	Classic	22	BC		450	115	750	5-10952141

V84

V86

V80

V71

V71

V71



Photo: Giulia Blasi



Tyre name	Performance level	ETRTO	Alternative size	Construction	TPI	Tread compound	Technology	Inflating (kPa)	Load (kg)	Weight (g)	Mitas code
<b>CITY &amp; TREKKING</b>											
WALRUS	Standard	47-622	28 x 1,75; 700 x 45C	Classic	22	BC		280	96	820	5-10952704
WALRUS	Standard	47-559	26 x 1,75 x 2	Classic	22	BC		450	115	730	5-10952701
WALRUS	Standard	47-507	24 x 1,75 x 2	Classic	22	BC		280	80	680	5-10952709
WALRUS	Standard	47-406	20 x 1,75 x 2	Classic	22	BC		450	86	560	5-10952714
WALRUS	Standard	47-355	18 x 1,75 x 2	Classic	22	BC		320	62	550	5-10951841
WALRUS	Standard	47-305	16 x 1,75 x 2	Classic	22	BC		280	51	460	5-10951851
WALRUS	Standard	47-203	12 1/2 x 1,75 x 2 1/4	Classic	22	BC		250	34	320	5-10967339
WALRUS	Standard	47-152	10 x 1,75 x 2	Classic	22	BC		380	34	280	5-10950104
COBRA	Standard	50-559	26 x 1,90	Classic	22	BC		450	126	760	5-10951279
COBRA	Standard	40-406	20 x 1,50	Classic	22	BC		450	76	460	5-10951880
MISTRAL	Standard	40-635	28 x 1 1/2	Wireless	22	BC		280	77	830	5-12950408
FLIPPER	Standard	37-622	700 x 35C	Classic	22	BC		600	106	580	5-10951349

V41

V41

KIDS V41

KIDS V41

KIDS V41

KIDS V41

KIDS V41

KIDS V41

V58

KIDS V58

V19

V70

ridemitas.com

4  
2

CITY  
TREKKING

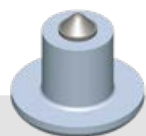
Mitas



# ICE SNOW



Mitas Winter tyres offer the highest quality of studs. The carbide tips in an aluminum body ensure the lowest possible weight and the highest wear resistance. The studs can last several thousands of kilometers. The tips get gently abraded and slightly pushed into the tread knobs while riding but this has no influence neither on the riding comfort or the stud performance. It is recommended that new tyres are allowed a 40 – 50 km “bedding in” period in order to allow the studs to settle in their housings. No heavy braking or aggressive riding should be performed during this first period.



The carbide tips in an aluminum body

The effectiveness of studs depends on their total number and allocation in the tread pattern. Generally, the best performance can be achieved on packed snow and frozen tarmac. On the contrary, in deep snow or on cobblestones the effect is minimal. The performance of studded tires is significantly influenced by the inflation pressure. Higher pressure reduces the noise when riding on hard surfaces whilst lower pressures increase the effectiveness of the studs. Performance and adhesion limits of winter tyres should be approached with caution. No recommendations or descriptions can advise on these boundaries. The use of studded bicycle tyres is not limited by legislation.



## GRIPPER ICE

ELITE

ANTIPUNCTURE SYSTEM



## FROSTER

ELITE

ANTIPUNCTURE SYSTEM

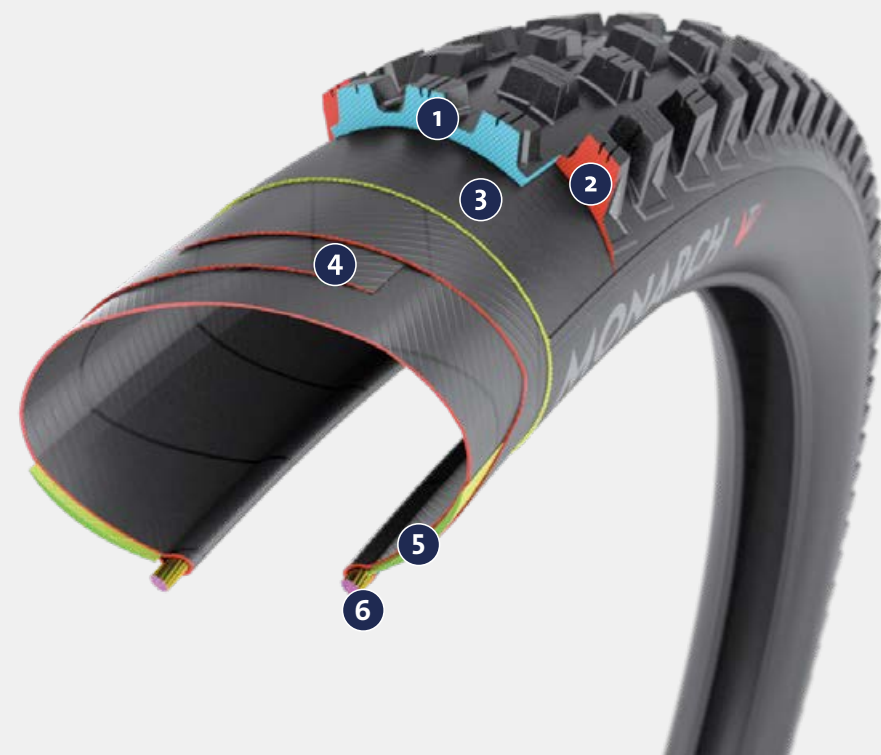
Tyre name	Performance level	ETRTO	Alternative size	Construction	TPI	Tread compound	Technology	Inflating (kPa)	Load (kg)	Weight (g)	Mitas code	
<b>ICE &amp; SNOW</b>												
GRIPPER ICE (272 studs)	Elite	42-622	700 x 40C	Classic	22	SWC	▲ APS   ▲ RS	500	115	890	5-10952723	R06
GRIPPER ICE (136 studs)	Elite	42-622	700 x 40C	Classic	22	SWC	▲ APS   ▲ RS	500	115	850	5-10952722	R06
FROSTER (240 studs)	Elite	47-559	26 x 1,75 x 2	Classic	22	SWC	▲ APS   ▲ RS	450	115	860	5-10952133	R07
FROSTER (120 studs)	Elite	47-559	26 x 1,75 x 2	Classic	22	SWC	▲ APS   ▲ RS	450	115	830	5-10952132	R07
FROSTER JP (100 studs)	Elite	47-507	24 x 1,75 x 2	Classic	22	SWC	▲ APS   ▲ RS	450	105	770	5-10967307	R20





## DH SUPRA MAX

Tubeless specification with increased carcass resistance, Optimized Grip, stable riding in difficult terrain even at lower pressure. Extreme protection against „Snake Bite“ and sidewall punctures and enhanced puncture resistance of tyre crown.



- 1 **New Dual Compound tread**  
Provide durable performance, combining optional grip and high resistance to abrasion.
- 2 **Dead low rebound compound**  
for side patterns figures.  
Provide excellent adhesion and traction.  
Optimal for extreme riding in harsh and ragged terrain.
- 3 **TEXTRA reinforcement layer**  
Rubberized high-density fabric from bead to bead, increases resistance against cuts and abrasion.
- 4 **127 TPI Casing**  
Carcass.
- 5 **Mitas “wings”**  
Sidewall Reinforcement.
- 6 **Aramid Beads**  
Reinforced.



## TUBELESS SUPRA

Tubeless specification with high-density sidewalls protection; Optimized compound for durability and low rolling resistance while maintaining excellent level of grip in all conditions. A light and long-lasting option. Extreme protection against „Snake Bite“ and sidewall punctures and enhanced puncture resistance of tyre crown.



## Tubeless with CRX compound for MTB and Gravel:

- CRX (CARBON RACE EXTREME LIGHT): Rubber compound on active carbon black basis. Such provides high structural strength, enhanced abrasion resistance, excellent adhesion, grip and low drag characteristics.

## Tube type with SMC for road racing:

- SMC (SILICA MEDIUM): Special tread compound with admixture of activated silica distinguishing itself by low drag, good adhesive properties, long durability. Intended for sportive usage in universal conditions. This compound shows very stable properties at lower temperatures.

- 1 **TEXTRA reinforcement layer**  
Rubberized high-density fabric from bead to bead, increases resistance against cuts and abrasion.
- 2 **127 TPI Casing**  
Carcass.
- 3 **Aramid Beads**  
Reinforced.





## E-PROTEC 360°

### E-PROTEC 360°

Ultimate puncture protection made of 1.5 mm thick rubber.

- The special compound is placed between tread and carcass. Due to its properties high structural strength and hardness, it prevents punctures or cut-offs. Enhanced protection is provided by additional EXTRA layer.
- Applied 10 mm wide reflective stripe brings intensive light reflection from all angles, thus increasing safety.



- 1 Puncture protection Rubber belt 1,5 mm
- 2 E-protec 360°
- 3 Highly visible reflex stripe 10 mm wide
- 4 Twisted Steel Wire (2x2)



## ANTIPUNCTURE SYSTEM

## E-BIKE ANTIPUNCTURE SYSTEM

## STOP THORN

### CLASSIC

reliability; resistance to wear; good riding properties; higher inflating pressure.

- **Classic + BC** (Base compound) 22 TPI: Standard tread black-carbon compound with long service life and good riding properties; it is for daily usage in universal conditions
- **Classic + APS** (Base compound) 22 TPI: APS (Atipuncture system) 1mm thick puncture protection rubber placed between the tread and the carcass
- **Classic + E-APS** (Optimal Compound) 29 TPI: E-APS – 1,5 mm thick puncture protection rubber placed between the tread and the carcass, a great choice for e-bikes.
- **Classic + Stop Thorn** (Optimal Compound) 29 TPI: ST (STOP THORN) – Ultimate puncture protection made of 3 mm thick rubber with Long Way construction thanks reinforced sidewalls and Optimal compound.
- **OC** (OPTIMAL) – Compound with higher resistance against abrasion. Optimal balance of abrasiveness and lifetime.



- 1 Puncture protection rubber belt
- 2 Carcass
- 3 Reflex Stripe
- 4 Twisted Steel Wire (2x2)



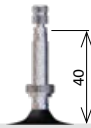


# TUBES

## COMPOUNDS FOR TUBES

<b>LHC</b> LIGHT COMPOUND Compound with a higher structural strength	<b>SBC</b> SPECIAL BASIC COMPOUND Compound for special sizes	<b>BSC</b> BASIC STANDARD COMPOUND Standard compound for classic tubes
---	---	---

Marking	Name	Wall thickness	Material	Cap
LH	Light	0,60	LHC	silver
CL	Classic	0,90	BSC	black
SSS	Slug - SELF SEALANT	0,90	SBC	green
TS	Tubeless Supra valve	valve	valve	blue
X	Extreme	1,20	SBC	red
MD	Moped	1,30	BSC	black



Nominal Diameter (mm)	Short Dimension	ETRTO	Alternative Size	Weight [g]	AV35	AV40	AV48	DV35	DV40	DV48	FV47	FV60	FV80	IV40
					<b>CLASSIC</b>		BSC 0,9 mm							
622 / 635	28 / 29"	62/75 - 622	"PLUS" size 29 x 2.45 - 3.00	264		5-10300040					5-10300047			
622 / 635	28 / 29"	47/62-622/635	28 / 29 x 1.75 - 2.45	196		5-10340180	5-10340182		5-10340183	5-10340186	5-10340184			5-10340187
622 / 635	28"	28/47-622/635	28 x 1.10 - 1.75	136		5-10340060	5-10340061		5-10340062	5-10340064	5-10340063	5-10340067		5-10340066
622 / 635	700	23/28-622/635	700 x 23C / 28C	97							5-10340010	5-10340011	5-10340012	
584	27.5"	62/75 - 584	"PLUS" size 27,5 x 2.45 - 3.00	249		5-10301340					5-10301343			
584	27.5"	47/62-584	27,5 x 1.75 - 2.45	185		5-10340170	5-10340176		5-10340172		5-10340173			5-10340175
584 / 597	26 / 27.5"	28/47-584/597	26 / 27.5 x 1.10 - 1.75	128		5-10340050			5-10340051		5-10340052			5-10340053
559	26"	47/62-559	26 x 1.75 - 2.45	178		5-10340160	5-10340162		5-10340163		5-10340164			5-10340166
559	26"	28/47-559	26 x 1.10 - 1.75	123		5-10340040	5-10340044		5-10340041		5-10340042			5-10340043
507	24"	47/62-507	24 x 1.75 - 2.45	163		5-10340150	5-10340151		5-10340152		5-10340154			5-10340154
507	24"	28/47-507	24 x 1.10 - 1.75	112		5-10340030	5-10340031		5-10340032					5-10340033
406	20"	47/62-406	20 x 1.75 - 2.45	133		5-10340140	5-10340144		5-10340141					5-10340143
406	20"	28/47-406	20 x 1.10 - 1.75	92		5-10340020	5-10340023		5-10340021					5-10340022
355	18"	32/47-355	18 x 1.25 - 1.75	82	5-10340100		5-10340102	5-10340101						
305	16"	47/62-305	16 x 1.75 - 2.45	104	5-10340130		5-10340133	5-10340131						5-10340132
305	16"	32/47-305	16 x 1.25 - 1.75	72	5-10340090			5-10340091						5-10340092
254 / 288	14"	32/47-254/288	14 x 1.25 - 1.75	65	5-10340080									
					<b>LIGHT</b>		LHC 0,6 mm							
622	28 / 29"	47/57-622	29 x 1.75 - 2.30	126							5-10340110			
622	700	23/28-622	700 x 23C	75							5-10340001	5-10340002	5-10340003	
					<b>EXTREME</b>		SBC 1,2 mm							
622	28 / 29"	54/75 - 622	29 x 2.10 - 3.00	364							5-10303020			
584	27.5"	54/75 - 584	27,5 x 2.10 - 3.00	343							5-10303018			
559	26"	54/75 - 559	26 x 2.10 - 3.00	330							5-10303017			
					<b>SLUG - SELF SEALANT</b>		BSC 0,9 mm							
622	28 / 29"	47/62 - 622/635	28 / 29 x 1.75 - 2.45	306		5-10340181					5-10340185			
584	27.5"	47/62 - 584/597	27,5 x 1.75 - 2.45	295		5-10340171					5-10340174			
559	26"	47/62 - 559	26 x 1.75 - 2.45	288		5-10340161					5-10340165			

# GAADI TUBES

**GAADI®** is a linear bicycle tube made of high-quality compound and having two ends. Available for all wheel sizes from 20 to 28 inches, it can be delivered with a Dunlop valve (DV), Sclaverand / French (FV), Italian valve (IV) or with a Schröder valve (SV).



Nominal Diameter (mm)	ETRTO	Alternative Marking	Weight (average)	DV35	DV40	SV40	FV47	VERSION	
								AFM	OEM
<b>GAADI TUBES</b>									
622 635	50 / 54 - 622	28 / 29 x 1,90 - 2,10	214	x	5-10317022	5-10317023	5-10317021	111	150
	40 / 47 - 622 / 635	700 x 38 / 45C	209	x	5-10317019	5-10317020	5-10317018	111	150
584 597	32 / 37 - 622 / 635	700 x 32 / 35C	165	x	5-10317016	5-10317017	5-10317015	111	150
	50 / 54 - 584 / 597	27,5 x 1,90 - 2,10	205	x	5-10317031	5-10317032	5-10317033	111	150
559	40 / 47 - 584 / 597	27,5 x 1,60 - 1,75	201	x	5-10317028	5-10317029	5-10317030	111	150
	32 / 37 - 584 / 597	x	157	x	5-10317025	5-10317026	5-10317027	111	150
507	50 / 54 - 559	26 x 1,90 - 2,10	195	x	5-10317013	5-10317014	5-10317012	111	150
	40 / 47 - 559	26 x 1,60 - 1,75	191	x	5-10317010	5-10317011	5-10317009	111	150
406	50 / 54 - 507	24 x 1,90 - 2,10	180	5-10317007	x	5-10317008	5-10317006	111	150
	40 / 47 - 507	24 x 1,60 - 1,75	176	5-10317004	x	5-10317005	5-10317003	111	150
	50 / 54 - 406	20 x 1,90 - 2,10	152	5-10317001	x	5-10317002	5-10317000	111	150



# TUBES





Photo: Giulia Blasi

# Safety & Inflating



## RS – reflex stripe

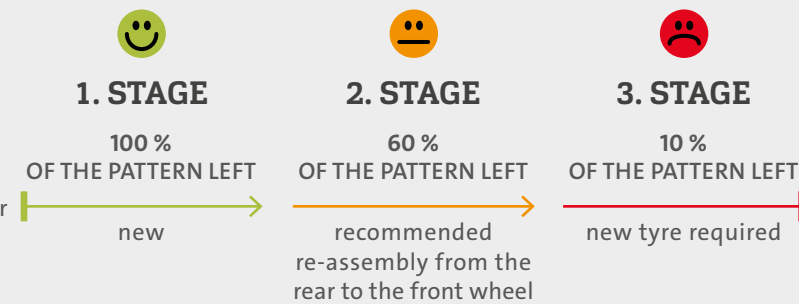
Excellent properties of reflective stripe provide a high light reflection during dusk and dawn, night, fog, rain and low light conditions for the whole tyre life.

Mitas bicycle tyres with the reflective carry world-wide valid certificate E4 8R 002058 ensuring the quality of such tyre production according to the standards and parameters. The reflective stripe on the sidewall is a distinctive safety esthetic element increasing the utility and value of the product.



## CLEVER FACE

Tyre Abrasion Integrated Identifier



## Inflating – conversion table

CONVERSION kPa to psi, bar, atm, Torr																		
kPa	160	190	200	250	280	320	350	380	400	450	500	550	560	600	630	650	700	800
psi	23.2	27.6	29.0	36.3	40.6	46.4	50.8	55.1	58.0	65.3	72.5	79.8	81.2	87.0	91.4	94.3	101.5	116.0
bar	1.6	1.9	2.0	2.5	2.8	3.2	3.5	3.8	4.0	4.5	5.0	5.5	5.6	6.0	6.3	6.5	7.0	8.0
atm	1.6	1.9	2.0	2.5	2.8	3.2	3.5	3.8	3.9	4.4	4.9	5.4	5.5	5.9	6.2	6.4	6.9	7.9
Torr	1200	1425	1500	1875	2100	2400	2625	2850	3000	3375	3750	4125	4200	4500	4725	4875	5250	6000

# ACCESSORIES



## TSS – TUBELESS SEALANT

Special liquid sealant latex-based is intended mainly for tyres of TUBELESS SUPRA construction in order to create tubeless system.



## ACCESSORIES

Product Name	Specifications	Mitas code
TUBELESS SEALANT 150 ml		7-001632
TUBELESS SEALANT 1000 ml		5-12265111-000
TUBELESS SEALANT 5000 ml		5-12265112-000
TUBELESS SUPRA KIT 26"	set for one bike	5-10320000-000
TUBELESS SUPRA KIT 27,5"	set for one bike	5-10332000-000
TUBELESS SUPRA KIT 29"	set for one bike	5-10331000-000
TUBELESS SUPRA VALVES	set for one bike	5-10327000-000







Mitas Bicycle Tyres and Tubes  
Rubena Náchod, s.r.o.  
Českých bratří 338  
547 01 Náchod, Czech Republic

Your Distributor/Dealer:

**Mitas** TYRES

MY  
ENTYRE  
WORLD

For more information about  
MITAS bike tyres and tubes visit:

[ridemitas.com](http://ridemitas.com)

  [ridemitas](https://www.instagram.com/ridemitas)

#MyEnTyreWorld